

EUROPEAN PATENT OFFICE  
U.S. PATENT AND TRADEMARK OFFICE

CPC NOTICE OF CHANGES 1752

DATE: MAY 1, 2025

PROJECT RP12149

**The following classification changes will be effected by this Notice of Changes:**

<u>Action</u>	<u>Subclass</u>	<u>Group(s)</u>
<b>SCHEME:</b>		
Symbols New:	A63C	19/003
Titles Changed:	A63B	67/02
	A63B	69/3691
	A63C	5/075
	A63C	11/08, 11/10
	A63C	17/01, 17/02, 17/04
	A63C	19/00, 19/02, 19/10
Warnings New:	A63B	69/3691, 69/3694, 69/3697
	A63C	19/003
Warnings Modified:	A63C	Subclass
<b>DEFINITIONS:</b>		
Definitions New:	A63C	7/1006, 7/1073
	A63C	17/065, 17/10
	A63C	19/003
Definitions Modified:	A63B	67/02
	A63B	69/3623, 69/3652, 69/3661, 69/3676, 69/3691
	A63C	3/10
	A63C	5/025, 5/035, 5/06, 5/075, 5/16
	A63C	10/00
	A63C	11/001, 11/002, 11/006, 11/06, 11/08, 11/10
	A63C	17/00, 17/01, 17/02, 17/04
	A63C	19/00, 19/02, 19/10

**The following subclasses/groups are also impacted by this Notice of Changes (indicate subclasses/groups outside of the project scope, such as those listed in the CRL): E01C 13/00**

**This Notice of Changes includes the following [Check the ones included]:**

1. CLASSIFICATION SCHEME CHANGES

- A. New, Modified or Deleted Group(s)
- B. New, Modified or Deleted Warning(s)
- C. New, Modified or Deleted Note(s)

CPC NOTICE OF CHANGES 1752

DATE: MAY 1, 2025

PROJECT RP12149

D. New, Modified or Deleted Guidance Heading(s)

2. DEFINITIONS

A. New or Modified Definitions (Full definition template)

B. Modified or Deleted Definitions (Definitions Quick Fix)

3.  REVISION CONCORDANCE LIST (RCL)

4.  CHANGES TO THE CPC-TO-IPC CONCORDANCE LIST (CICL)

5.  CHANGES TO THE CROSS-REFERENCE LIST (CRL)

CPC NOTICE OF CHANGES 1752

DATE: MAY 1, 2025

PROJECT RP12149

1. CLASSIFICATION SCHEME CHANGES

A. New, Modified or Deleted Group(s)

**SUBCLASS A63B - APPARATUS FOR PHYSICAL TRAINING, GYMNASTICS, SWIMMING, CLIMBING, OR FENCING; BALL GAMES; TRAINING EQUIPMENT**

<b>Type*</b>	<b>Symbol</b>	<b>Indent Level Number of dots (e.g. 0, 1, 2)</b>	<b>Title “CPC only” text should normally be enclosed in {curly brackets}**</b>	<b>Transferred to#</b>
M	A63B67/02	1	Special golf games, e.g. miniature golf { ; Putting tracks therefor }	
C	A63B69/3691	2	{ Golf practising terrains }	A63C19/003, A63B69/3691
C	A63B69/3694	3	{ for driving only }	A63C19/003, A63B69/3694
C	A63B69/3697	3	{ with putting taking place on a green other than the target green }	A63C19/003, A63B69/3697

**SUBCLASS A63C - SKATES; SKIS; ROLLER SKATES; DESIGN OR LAYOUT OF COURTS, RINKS OR THE LIKE**

<b>Type*</b>	<b>Symbol</b>	<b>Indent Level Number of dots (e.g. 0, 1, 2)</b>	<b>Title “CPC only” text should normally be enclosed in {curly brackets}**</b>	<b>Transferred to#</b>
M	A63C5/075	2	Vibration dampers	
M	A63C11/08	2	Apparatus for waxing or dewaxing	
M	A63C11/10	1	Apparatus for towing (ski-lifts B61B 11/00)	
M	A63C17/01	1	Skateboards (A63C17/02 - A63C17/28 take precedence)	
M	A63C17/02	1	with wheels arranged in two pairs {(for skateboards A63C17/015)}	
M	A63C17/04	1	with wheels arranged otherwise than in two pairs {(for skateboards A63C17/014)}	
M	A63C19/00	0	Design or layout of playing courts, rinks, bowling greens or areas for water-skiing; Covers therefor	
N	A63C19/003	1	{ Golf courses }	
M	A63C19/02	1	Shaping of the surface of courts according to the necessities of the different games	
M	A63C19/10	1	Ice-skating or roller-skating rinks; Slopes or trails for skiing, ski-jumping or tobogganing	

\*N = new entries where reclassification into entries is involved; C = entries with modified file scope where reclassification of documents from the entries is involved; Q = new entries which are firstly populated with documents via administrative transfers from deleted (D) entries. Afterwards, the transferred documents into the Q entry will either stay or be moved to more appropriate entries, as determined by intellectual reclassification; T = existing entries with enlarged file scope, which receive documents from C or D entries, e.g. when a limiting reference is removed from the entry title; M = entries with no change to

## CPC NOTICE OF CHANGES 1752

DATE: MAY 1, 2025

PROJECT RP12149

the file scope (no reclassification); D = deleted entries; F = frozen entries will be deleted once reclassification of documents from the entries is completed; U = entries that are unchanged.

### NOTES:

- **\*\*No curly brackets }** are used for titles in CPC only subclasses, e.g. C12Y, A23Y; 2000 series symbol titles of groups found at the end of schemes (orthogonal codes); or the Y section titles. The curly brackets } are used for 2000 series symbol titles found interspersed throughout the main trunk schemes (breakdown codes).
- U groups: it is obligatory to display the required “anchor” symbol (U group), i.e. the entry immediately preceding a new group or an array of new groups to be created (in case new groups are not clearly subgroups of C-type groups). Always include the symbol, indent level and title of the U group in the table above.
- All entry types should be included in the scheme changes table above for better understanding of the overall scheme change picture. Symbol, indent level, and title are required for all types.
- “Transferred to” column must be completed for all C, D, F, and Q type entries. F groups will be deleted once reclassification is completed.
- When multiple symbols are included in the “Transferred to” column, avoid using ranges of symbols in order to be as precise as possible.
- For administrative transfer of documents, the following text should be used: “<administrative transfer to XX>”, “<administrative transfer to XX and YY simultaneously>”, or “<administrative transfer to XX, YY, ...and ZZ simultaneously>” when administrative transfer of the same documents is to more than one place.
- Administrative transfer to main trunk groups is assumed to be the source allocation type, unless otherwise indicated.
- Administrative transfer to 2000/Y series groups is assumed to be “additional information”.
- If needed, instructions for allocation type should be indicated within the angle brackets using the abbreviations “ADD” or “INV”: <administrative transfer to XX ADD> , <administrative transfer to XX INV>, or <administrative transfer to XX ADD, YY INV, ... and ZZ ADD simultaneously>.
- In certain situations, the “D” entries of 2000-series or Y-series groups may not require a destination (“Transferred to”) symbol, however it is required to specify “<no transfer>” in the “Transferred to” column for such cases.
- For finalization projects, the deleted “F” symbols should have <no transfer> in the “Transferred to” column.
- For more details about the types of scheme change, see CPC Guide.

CPC NOTICE OF CHANGES 1752

DATE: MAY 1, 2025

PROJECT RP12149

B. New, Modified or Deleted Warning(s)

**SUBCLASS A63B - APPARATUS FOR PHYSICAL TRAINING, GYMNASTICS, SWIMMING, CLIMBING, OR FENCING; BALL GAMES; TRAINING EQUIPMENT**

<u>Type*</u>	<u>Location</u>	<u>Old Warning</u>	<u>New/Modified Warning</u>
N	A63B 69/3691		Group A63B 69/3691 is impacted by reclassification into group A63C 19/003. Groups A63B 69/3691 and A63C 19/003 should be considered in order to perform a complete search.
N	A63B 69/3694		Group A63B 69/3694 is impacted by reclassification into group A63C 19/003. Groups A63B 69/3694 and A63C 19/003 should be considered in order to perform a complete search.
N	A63B69/3697		Group A63B 69/3697 is impacted by reclassification into group A63C 19/003. Groups A63B 69/3697 and A63C 19/003 should be considered in order to perform a complete search.

**SUBCLASS A63C - SKATES; SKIS; ROLLER SKATES; DESIGN OR LAYOUT OF COURTS, RINKS OR THE LIKE**

<u>Type*</u>	<u>Location</u>	<u>Old Warning</u>	<u>New/Modified Warning</u>
M	A63C	<p>1. The following IPC groups are not in the CPC scheme. The subject matter for these IPC groups is classified in the following CPC groups: A63C5/14 covered by A63C 5/12</p> <p>2. In this subclass non-limiting references (in the sense of paragraph 39 of the Guide to the IPC) may still be displayed in the scheme.</p>	<p>1. The following IPC groups are not in the CPC scheme. The subject matter for these IPC groups is classified in the following CPC groups: A63C5/14 covered by A63C 5/12</p> <p>2. {In this subclass non-limiting references (in the sense of paragraph 39 of the Guide to the IPC) may still be displayed in the scheme.}</p>
N	A63C 19/003		Group A63C 19/003 is incomplete pending reclassification of documents from groups A63B 69/3691, A63B 69/3694 and A63B 69/3697. All groups listed in this Warning should be considered in order to perform a complete search.

\*N = new warning, M = modified warning, D = deleted warning

NOTE: The "Location" column only requires the symbol PRIOR to the location of the warning. No further directions such as "before" or "after" are required.

## 2. A. DEFINITIONS (new)

### A63C 7/1006

#### **Definition statement**

*This place covers:*

Devices for stopping a ski separated from the shoe.

### A63C 7/1073

#### **Definition statement**

*This place covers:*

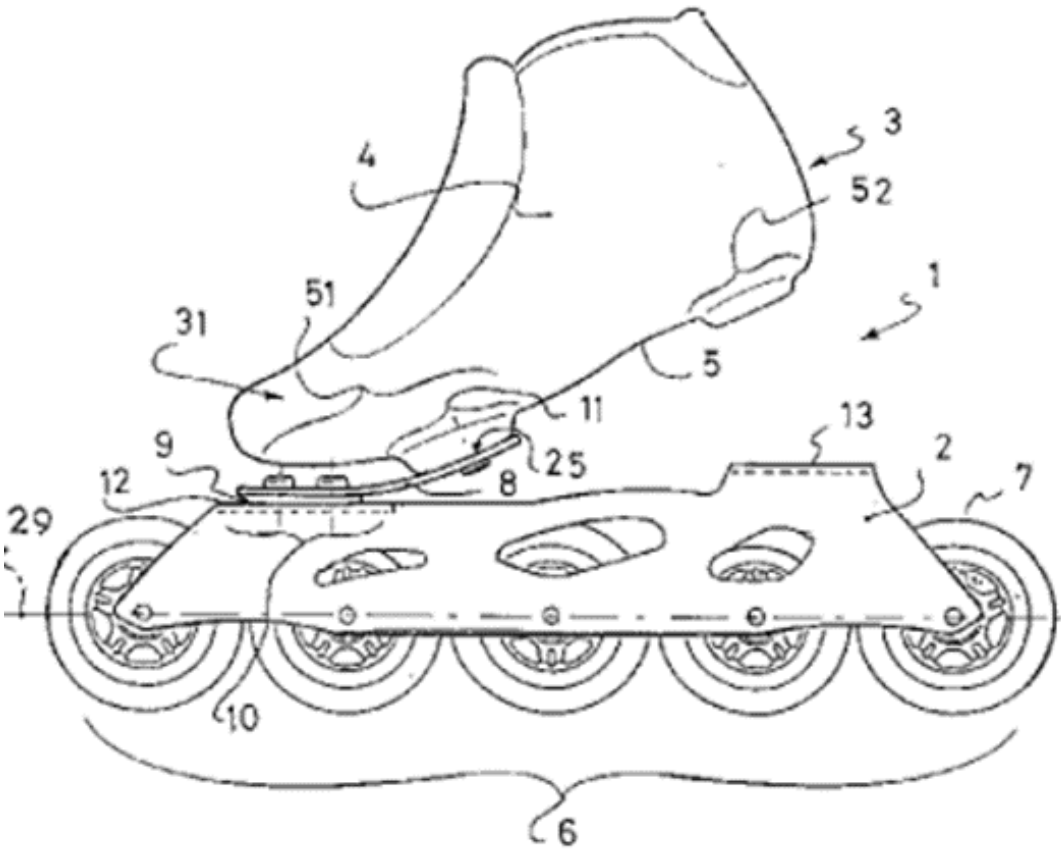
Devices for reducing the speed of the skis when skiing.

### A63C 17/065

#### **Definition statement**

*This place covers:*

Illustrative example of subject matter classified in this place:

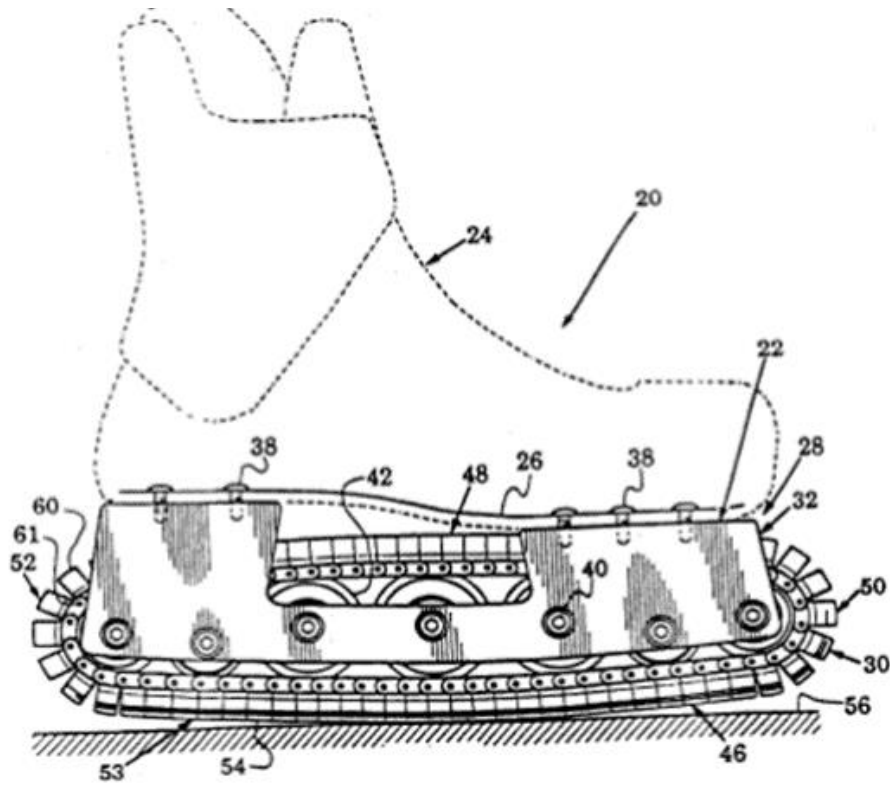


**A63C 17/10**

**Definition statement**

*This place covers:*

Illustrative example of subject matter classified in this place:



**Synonyms and keywords**

*In patent documents, the following words/expressions are often used as synonyms:*

- Continuous track or tread;
- Caterpillar track or tread;
- Tank tread



DATE: MAY 1, 2025

PROJECT RP12149

## A63C 19/003

### Definition statement

*This place covers:*

Design and layout of courses primarily intended for golf. These designs incorporate features such as fairways, greens, bunkers, hazards and tee boxes arranged in sequences that reflect natural outdoor landscapes, commonly with 9 or 18 holes. The course requires players to traverse its full length, with putting taking place on the green and a structured progression from tee to hole.

### References

#### Informative references

*Attention is drawn to the following places, which may be of interest for search:*

Special golf games, e.g. miniature golf; Putting tracks therefor	<a href="#">A63B 67/02</a>
Golf practising terrains	<a href="#">A63B 69/3691</a>

DATE: MAY 1, 2025

PROJECT RP12149

## 2. A. DEFINITIONS (modified)

### A63B 67/02

Insert: The following new Definition statement.

#### Definition statement

*This place covers:*

Golf games featuring unique gameplay formats or distinct elements that provide an alternative approach to the sport. This group also includes putting games played on extended putting platforms or tracks, as well as the putting tracks therefor.

#### References

Replace: The existing Informative references table with the following updated table.

#### Informative references

*Attention is drawn to the following places, which may be of interest for search:*

Inclined platforms for practising drives from slopes	<a href="#">A63B 69/3652</a>
Mats for golf practice	<a href="#">A63B 69/3661</a>
Golf practising terrains	<a href="#">A63B 69/3691</a>
Golf courses	<a href="#">A63C 19/003</a>

DATE: MAY 1, 2025

PROJECT RP12149

**A63B 69/3623**

Replace: The existing Limiting references table with the following updated table.

**References**

**Limiting references**

*This place does not cover:*

Attachments on the body, e.g. for measuring, aligning, restraining	<a href="#">A63B 69/3608</a>
Means associated with the ball for indicating or measuring, e.g. speed, direction	<a href="#">A63B 69/3658</a>
Mats for golf practice, e.g. mats having a simulated turf, a practice tee or a green area	<a href="#">A63B 69/3661</a>
Golf stance aids, e.g. means for positioning a golfer's feet	<a href="#">A63B 69/3667</a>
Golf practising terrains	<a href="#">A63B 69/3691</a>

**A63B 69/3652**

Replace: The existing Informative references table with the following updated table.

**References**

**Informative references**

*Attention is drawn to the following places, which may be of interest for search:*

Special golf games, e.g. miniature golf; Putting tracks therefor	<a href="#">A63B 67/02</a>
Mats for golf practice, e.g. mats having a simulated turf, a practice tee or a green area	<a href="#">A63B 69/3661</a>
Golf practising terrains	<a href="#">A63B 69/3691</a>

DATE: MAY 1, 2025

PROJECT RP12149

**A63B 69/3661**

**References**

Replace: The existing Informative references table with the following updated table.

**Informative references**

*Attention is drawn to the following places, which may be of interest for search:*

Special golf games, e.g. miniature golf; Putting tracks therefor	<a href="#">A63B 67/02</a>
Inclined platforms for practising drives from slopes	<a href="#">A63B 69/3652</a>
Golf practising terrains	<a href="#">A63B 69/3691</a>
Surfaces simulating grass	<a href="#">E01C 13/08</a>

**A63B 69/3676**

**References**

Replace: The existing Limiting references table with the following updated table.

**Limiting references**

*This place does not cover:*

Attachments on the body, e.g. for measuring, aligning, restraining	<a href="#">A63B 69/3608</a>
Mats for golf practice, e.g. mats having a simulated turf, a practice tee or a green area	<a href="#">A63B 69/3661</a>
Golf stance aids, e.g. means for positioning a golfer's feet	<a href="#">A63B 69/3667</a>
Golf practising terrains with putting taking place on a green other than the target green	<a href="#">A63B 69/3697</a>

DATE: MAY 1, 2025

PROJECT RP12149

Replace: The existing Informative references table with the following updated table.

**Informative references**

*Attention is drawn to the following places, which may be of interest for search:*

Putting tracks for special golf games	<a href="#">A63B 67/02</a>
Golf practising terrains	<a href="#">A63B 69/3691</a>

**A63B 69/3691**

**References**

Delete: The entire Limiting references section.

Insert: The following three new references in the Informative references table.

**Informative references**

*Attention is drawn to the following places, which may be of interest for search:*

Special golf games, e.g. miniature golf; Putting tracks therefor	<a href="#">A63B 67/02</a>
Mats for golf practice, e.g. mats having a simulated turf, a practice tee or a green area	<a href="#">A63B 69/3661</a>
Golf courses	<a href="#">A63C 19/003</a>

DATE: MAY 1, 2025

PROJECT RP12149

## A63C 3/10

### References

Replace: The existing Informative references table with the following updated table.

#### Informative references

*Attention is drawn to the following places, which may be of interest for search:*

Grinding machines for sharpening skate blade edges	B24B 3/003
Non-rotary grinding hand tools for sharpening skate blades	B24D 15/066

## A63C 5/025

Replace: The existing Definition statement text with the following updated text.

### Definition statement

*This place covers:*

Skis having a length typically shorter than 100 cm, e.g. snowblades, snowskates, figl skis, skis for children.

Replace: The existing Glossary text with the following updated text.

### Glossary of terms

*In this place, the following terms or expressions are used with the meaning indicated:*

figl	shortening from German's "Firngleiter": short skis performing on deep icy snow
------	--------------------------------------------------------------------------------

DATE: MAY 1, 2025

PROJECT RP12149

Insert: The following new Synonyms and Keywords section.

### **Synonyms and Keywords**

*In patent documents, the following words/expressions are often used as synonyms:*

- Snowblades;
- Skiblades;
- Skiboards;
- Mini skis;
- Fun skis;
- Easy skis;
- Figl skis;
- Children skis.

### **A63C 5/035**

Insert: A period at the end of the Definition statement, as follows.

### **Definition statement**

*This place covers:*

Skis or snowboard with rolling or like devices where the main surface engaging element is a snow runner.

### **References**

Delete: The entire Limiting references section.

Insert: The following new Informative references section.

### **Informative references**

*Attention is drawn to the following places, which may be of interest for search:*

Roller skis	A63C 17/045
-------------	-------------

DATE: MAY 1, 2025

PROJECT RP12149

## A63C 5/06

Replace: The existing Definition statement text with the following updated text.

### Definition statement

*This place covers:*

Skis or snowboards with special devices thereon, e.g. steering devices or handlebars without a direct steering function for supporting the body movement.

### References

Delete: The entire Limiting references section.

Insert: The following new Informative references section.

### Informative references

*Attention is drawn to the following places, which may be of interest for search:*

Sledges with runners arranged in a single line	B62B 13/04
------------------------------------------------	------------

## A63C 5/075

### References

Replace: The existing Informative references table with the following updated table.

### Informative references

*Attention is drawn to the following places, which may be of interest for search:*

Vibration dampers per se	F16F 7/00
--------------------------	-----------



DATE: MAY 1, 2025

PROJECT RP12149

## A63C 5/16

Insert: The following new Definition statement.

### Definition statement

*This place covers:*

Devices enabling skis to be used whilst held in a particular configuration with respect to each other, e.g. for training or learning purposes.

### References

Delete: The entire Limiting references section.

Insert: The following new Informative references section.

### Informative references

*Attention is drawn to the following places, which may be of interest for search:*

Snow-ski boards with two or more runners or skis connected together by a rider-supporting platform	<a href="#">A63C5/031</a>
Exercising apparatus for lower limbs with guided foot support	<a href="#">A63B 23/0417</a>
Training appliances or apparatus for skiing	<a href="#">A63B 69/18</a>

## A63C 10/00

### References

Delete: The entire Limiting references section.

DATE: MAY 1, 2025

PROJECT RP12149

Insert: The following new Informative references section.

**Informative references**

*Attention is drawn to the following places, which may be of interest for search:*

Bindings for monoskis	<a href="#">A63C 9/00</a>
Water skis	<a href="#">B63B 32/30</a>
Wakeboards	<a href="#">B63B 32/40</a>

Delete: The entire Special rules section.

Replace: The existing Synonyms and keywords table with the following updated table.

**Synonyms and keywords**

*In patent documents, the following words/expressions are often used with the meaning indicated:*

step-in	mechanism that ensures that, when pressing the shoe on the binding, the shoe will be automatically locked to the holder
---------	-------------------------------------------------------------------------------------------------------------------------

**A63C 11/001**

Insert: The following new Definition statement.

**Definition statement**

*This place covers:*

Skis or skiing accessories convertible to form seats.

CPC NOTICE OF CHANGES 1752

DATE: MAY 1, 2025

PROJECT RP12149

**References**

Replace: The existing Informative references table with the following updated table.

**Informative references**

*Attention is drawn to the following places, which may be of interest for search:*

Walking sticks convertible into seats	<a href="#">A45B 5/00</a>
Camping, traveling or sports stools	<a href="#">A47C 9/10</a>

**A63C 11/002**

Insert: The following new Definition statement.

**Definition statement**

*This place covers:*

Skis or skiing accessories convertible to form stretchers.

**References**

Insert: The following new reference in the Informative references table.

**Informative references**

*Attention is drawn to the following places, which may be of interest for search:*

Stretchers	<a href="#">A61G 1/00</a>
------------	---------------------------

DATE: MAY 1, 2025

PROJECT RP12149

**A63C 11/006**

**References**

Replace: The existing Informative references table with the following updated table.

**Informative references**

*Attention is drawn to the following places, which may be of interest for search:*

Devices for locking portable objects	<a href="#">E05B 73/00</a>
--------------------------------------	----------------------------

**A63C 11/06**

**References**

Replace: The existing Informative references table with the following updated table.

**Informative references**

*Attention is drawn to the following places, which may be of interest for search:*

Grinding machines for sharpening ski or snowboard edges	<a href="#">B24B 3/006</a>
Non-rotary grinding hand tools for sharpening ski edges	<a href="#">B24D 15/068</a>

**A63C 11/08**

**References**

Delete: The entire Limiting references section.

DATE: MAY 1, 2025

PROJECT RP12149

Insert: The following new Informative references section.

**Informative references**

*Attention is drawn to the following places, which may be of interest for search:*

Ski waxes	<a href="#">C09G 3/00</a>
-----------	---------------------------

**A63C 11/10**

Replace: The existing Definition statement text with the following updated text.

**Definition statement**

*This place covers:*

Accessories or arrangements for towing skiers, e.g. portable tow ropes.

**References**

Replace: The existing Limiting references table with the following updated table.

**Limiting references**

*This place does not cover:*

Ski-lifts	<a href="#">B61B 11/00</a>
-----------	----------------------------

Insert: The following new Informative references section.

**Informative references**

*Attention is drawn to the following places, which may be of interest for search:*

One wheeled motorised walk-type tractors	<a href="#">B62D 51/065</a>
------------------------------------------	-----------------------------

DATE: MAY 1, 2025

PROJECT RP12149

## A63C 17/00

Replace: The existing Definition statement text with the following updated text.

### Definition statement

*This place covers:*

Sport and recreation equipment with rollers, where steering is achieved by body movement, e.g. roller skates, inline skates, skateboards. The body movement can be supported by means for leaning, e.g. handlebars without a direct steering function, e.g. some types of kickboards.

### References

Replace: The existing Informative references table with the following updated table.

### Informative references

*Attention is drawn to the following places, which may be of interest for search:*

Elastic bouncing shoes fastened to the foot, e.g. spring shoes	<a href="#">A63B 25/10</a>
----------------------------------------------------------------	----------------------------

Delete: The entire Special rules section.

DATE: MAY 1, 2025

PROJECT RP12149

**A63C 17/01**

**References**

Insert: The following new Limiting references section.

**Limiting references**

*This place does not cover:*

Details of wheels arranged in two pairs	<a href="#">A63C17/02</a>
Details of wheels arranged otherwise than in two pairs	<a href="#">A63C17/04</a>
Skateboards or roller skates with endless tracks	<a href="#">A63C17/10</a>
Driving mechanisms for skateboards or roller skates	<a href="#">A63C17/12</a>
Brakes for skateboards or roller skates	<a href="#">A63C17/14</a>
Skateboards or roller skates adapted for use on specially shaped or arranged runways	<a href="#">A63C17/16</a>
Skateboards or roller skates convertible into ice or snow-running skates	<a href="#">A63C17/18</a>
Roller skates with fixable wheels permitting the skates to be used for walking	<a href="#">A63C17/20</a>
Wheels for roller skates	<a href="#">A63C17/22</a>
Skateboards or roller skates with special auxiliary arrangements, e.g. illuminating, marking or push-off devices	<a href="#">A63C17/26</a>
Skateboards or roller skates having arrangements for sitting	<a href="#">A63C17/28</a>

Replace: The existing Informative references table with the following updated table.

DATE: MAY 1, 2025

PROJECT RP12149

**Informative references**

*Attention is drawn to the following places, which may be of interest for search:*

Skis or snowboards with ground engaging rolls or belts	<a href="#">A63C 5/035</a>
Training apparatus for skateboarding	<a href="#">A63B 69/0093</a>
Hand carts	<a href="#">B62B</a>
Carriages for children	<a href="#">B62B 7/00</a>
Bicycles without a seat, e.g. non-motorised scooters	<a href="#">B62K 3/002</a>

Delete: The entire Special rules section.

**A63C 17/02**

**References**

Replace: The existing Limiting references table with the following updated table.

**Limiting references**

*This place does not cover:*

Skateboards with wheels arranged in two pairs	<a href="#">A63C 17/015</a>
-----------------------------------------------	-----------------------------

**A63C 17/04**

**References**

Replace: The existing Limiting references table with the following updated table.



DATE: MAY 1, 2025

PROJECT RP12149

**Limiting references***This place does not cover:*

Skateboards with wheels arranged otherwise than in two pairs	<a href="#">A63C 17/014</a>
Skateboards with wheels arranged in one track	<a href="#">A63C 17/016</a>

**A63C 19/00**Delete: The entire Definition statement.**References**Delete: The entire Limiting references section.Delete: The entire References out of a residual place section.Replace: The existing Informative references table with the following updated table.**Informative references***Attention is drawn to the following places, which may be of interest for search:*

Devices for generating a current of water in swimming pools, e.g. stream pools	<a href="#">A63B 69/125</a>
Bowling-alleys; Boccia courts	<a href="#">A63D 1/00</a>
Merry-go-rounds; Rocking-horses; Chutes; Switchbacks; Similar devices for public amusement	<a href="#">A63G</a>
Water roundabouts	<a href="#">A63G 3/00</a>
Race-courses	<a href="#">A63K 1/00</a>
Construction of surfaces or foundations	<a href="#">E01C</a>
Roofs	<a href="#">E04B 7/00</a>

CPC NOTICE OF CHANGES 1752

DATE: MAY 1, 2025

PROJECT RP12149

Buildings or groups of buildings for sports	E04H 3/10
Swimming or splash baths or pools	E04H 4/00
Coverings for baths	E04H 4/06

Replace: The existing Glossary of terms table with the following updated table.

**Glossary of terms**

*In this place, the following terms or expressions are used with the meaning indicated:*

layout	relative arrangement of the items constituting the court
--------	----------------------------------------------------------

**A63C 19/02**

Replace: The existing Definition statement text with the following updated text.

**Definition statement**

*This place covers:*

Shaping the surface of the court to match the requirements of a particular game, e.g. providing an inclined slope to the surface of the court in certain ball games.

**References**

Delete: The entire Limiting references section.

Insert: The following new Informative references section.

CPC NOTICE OF CHANGES 1752

DATE: MAY 1, 2025

PROJECT RP12149

**Informative references**

*Attention is drawn to the following places, which may be of interest for search:*

Pavings or foundations specially adapted for playgrounds or sports grounds	<a href="#">E01C 13/00</a>
Surfaces simulating grass	<a href="#">E01C 13/08</a>
Artificial surfaces for snow or ice sports	<a href="#">E01C 13/10</a>
Flooring	<a href="#">E04F 15/00</a>

Insert: The following new Special rules section.

**Special rules of classification**

The layout is classified in [A63C 19/00](#).

DATE: MAY 1, 2025

PROJECT RP12149

## A63C 19/10

### References

Replace: The existing Informative references table with the following updated table.

### Informative references

*Attention is drawn to the following places, which may be of interest for search:*

Chutes	A63G 21/00
Ski-lifts	B61B 11/00
Pavings for snow sports	E01C 13/12
Making or maintaining surfaces of snow or ice suitable for traffic or sporting purposes	E01H 4/00
Removing snow or ice from roads or like surfaces; Grading or roughening snow or ice	E01H 5/00
Processes or apparatus specially adapted for producing ice or snow for winter sports or similar recreational purposes; Producing artificial snow	F25C 3/00

CPC NOTICE OF CHANGES 1752

DATE: MAY 1, 2025

PROJECT RP12149

3. REVISION CONCORDANCE LIST (RCL)

<b>Type*</b>	<b>From CPC Symbol (existing)</b>	<b>To CPC Symbol(s)</b>
C	A63B 69/3691	A63C 19/003, A63B 69/3691
C	A63B 69/3694	A63C 19/003, A63B 69/3694
C	A63B 69/3697	A63C 19/003, A63B 69/3697

\* C = entries with modified file scope where reclassification of documents from the entries is involved; Q = new entries which are firstly populated with documents via administrative transfers from deleted (D) entries. Afterwards, the transferred documents into the Q entry will either stay or be moved to more appropriate entries, as determined by intellectual reclassification; D = deleted entries; F = frozen entries will be deleted once reclassification of documents from the entries is completed.

NOTES:

- Only C, D, F, and Q type entries are included in the table above.
- When multiple symbols are included in the “To” column, do not use ranges of symbols.
- For administrative transfer of documents, the following text should be used: “< administrative transfer to XX>”, “<administrative transfer to XX and YY simultaneously>”, or “<administrative transfer to XX, YY, ...and ZZ simultaneously>” when administrative transfer of the same documents is to more than one place.
- Administrative transfer to main trunk groups is assumed to be the source allocation type, unless otherwise indicated.
- Administrative transfer to 2000/Y series groups is assumed to be “additional information”.
- If needed, instructions for allocation type should be indicated within the angle brackets using the abbreviations “ADD” or “INV”: <administrative transfer to XX ADD>, <administrative transfer to XX INV>, or < administrative transfer to XX ADD, YY INV, ... and ZZ ADD simultaneously>.
- In certain situations, the “D” entries of 2000-series or Y-series groups may not require a destination (“To”) symbol, however it is required to specify “<no transfer>” in the “To” column for such cases.
- RCL is not needed for finalisation projects.

CPC NOTICE OF CHANGES 1752

DATE: MAY 1, 2025

PROJECT RP12149

4. CHANGES TO THE CPC-TO-IPC CONCORDANCE LIST (CICL)

<u>CPC</u>	<u>IPC</u>	<u>Action*</u>
A63C 17/014	A63C 17/04	UPDATED
A63C 17/015	A63C 17/02	UPDATED
A63C 17/016	A63C 17/06	UPDATED
A63C 19/003	A63C 19/00	NEW

\* Action column:

- For an (N) or (Q) entry, provide an IPC symbol and complete the Action column with "NEW."
- For an existing CPC main trunk entry or indexing entry where the existing IPC symbol needs to be changed, provide an updated IPC symbol and complete the Action column with "UPDATED."
- For a (D) CPC entry or indexing entry complete the Action column with "DELETE." IPC symbol does not need to be included in the IPC column.
- For an (N) 2000 series CPC entry which is positioned within the main trunk scheme (breakdown code) provide an IPC symbol and complete the action column with "NEW".
- For an (N) 2000 series CPC entry positioned at the end of the CPC scheme (orthogonal code), with no IPC equivalent, complete the IPC column with "CPCONLY" and complete the action column with "NEW".

NOTES:

- F symbols are not included in the CICL table above.
- T and M symbols are not included in the CICL table above unless a change to the existing IPC is desired.

CPC NOTICE OF CHANGES 1752

DATE: MAY 1, 2025

PROJECT RP12149

5. CROSS-REFERENCE LIST (CRL)

Definitions references impacted by this revision project

<u>Location of reference to be changed</u>	<u>Referenced subclass or group to be changed</u>	<u>Section of definition</u>	<u>Action; New reference symbol; New text</u>
E01C 13/00	A63B 69/3691	Limiting References	<u>Replace</u> with A63C 19/003

NOTES:

- The CRL tables above are used for changes to locations **outside** of the project scope. Changes to references in scheme titles or definitions **inside** the project scope will be reflected in the “scheme change” template or one of the “definition” templates.
- In addition to other changes proposed in the tables above, in the column titled “Referenced subclass or group to be changed,” **referenced** D symbols should indicate an action of “delete” or should indicate a replacement symbol and **referenced** F symbols should indicate a replacement symbol.
- When a reference is deleted, text related to that reference will also be deleted unless other references or a range of references associated with the same text remain.